

Dermacase



Can you identify this condition?

Jeng-Feng Chen MD Yu-Fei Chen MD

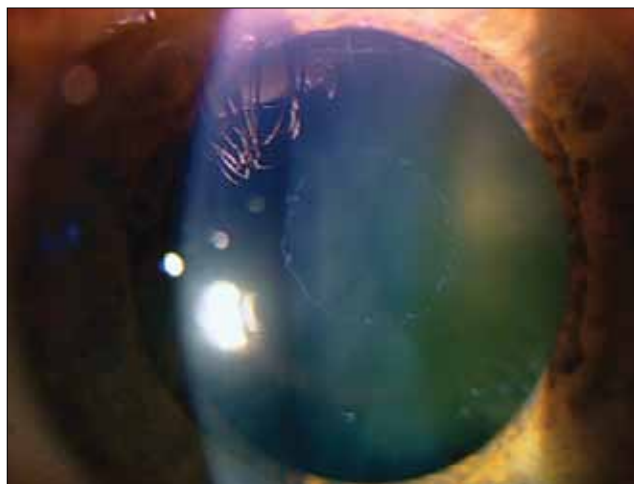
A healthy 29-year-old man presented with a 1-month history of itchy and mildly stinging skin eruptions on his face and back. Physical examination revealed discrete, erythematous annular plaques on the patient's cheeks and back, with multiple pinhead-sized folliculocentric pustules rimming the borders. The plaques varied in size. The patient's medical and family histories were unremarkable. He was not taking any medication when the lesions appeared.

The most likely diagnosis is

1. Eosinophilic pustular folliculitis
2. Tinea faciei
3. Annular pustular psoriasis
4. Erythema annulare centrifugum
5. Subacute cutaneous lupus erythematosus

Answer on page 685

Ophthaprobem



Can you identify this condition?

Ashley R. Brissette Kelly Schweitzer MD
Robert J. Campbell MD MSc FRCSC

A 75-year-old woman of Scandinavian descent presents to your office for a regular checkup and mentions that she has not had her eyes checked in many years. She has no vision or eye-related complaints. Her visual acuity is 20/25 in each eye. Examination of her left eye reveals a collection of white, flaky material in a circular pattern on the anterior lens capsule, and her left eye does not dilate completely when mydriatics are topically instilled. Fine, flaky material is also observed on the pupillary margin of the iris in both eyes.

The most likely diagnosis is

1. Primary open-angle glaucoma
2. Pigment dispersion syndrome
3. Pseudoexfoliation syndrome
4. Anterior subcapsular cataract

Answer on page 687